

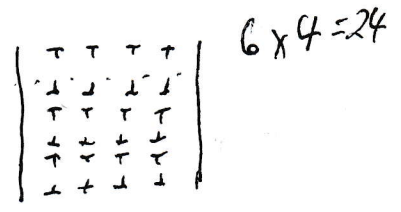
OMEGA 1

costs.txt

E:\GrokD2_EMPCCCC\EMPCCCC html\ship container build\info ship shots costs.txt

- 2 \$7.18 Plastruct Product Number: 90566
Tees Styrene 1/4 (5) Length: 24" $24 = 3 \times 8$ $3 \times 5 = 15$
- ~~1~~ ^{7.42} \$7.66 Plastruct Product Number: 90008
Angle ABS 3/8 (3) Length: 24" Need for corner bracing on all sides
- 2 \$10.36 Evergreen Product Number: 9108
Plastic Styrene Plain Sheet .125x8x21 (1) 6.5×21 bottom / 2 dividers
- 1 \$12.06 Evergreen Product Number: 9107
Plastic Styrene Plain Sheet .080x8x21 (2) 6.5×8 sides
- 1 \$10.69 Plastruct Product Number: 91108
White Sheet Styrene .125 (2) Size: 7"x12" Thickness: .125 Front & back
- 0 \$8.37 Plastruct Product Number: 91107
White Sheet Styrene .100 (2) Size: 7"x12" Thickness: .100
- 0 \$9.19 Midwest Product Number: 701-06
White Sheet Styrene .080 (4) Size: 7.6" x 11"

65.49 $\frac{1}{4}$ " angle



Do not know actual ship measurements

50 x 7 wide \leftarrow 6.5 WIDE $362.5' \times 50.75$

$4 \rightarrow 24$ $6 \rightarrow 36$ $9 \rightarrow 42$

Container 5.5 long $1\frac{1}{8}$ wide $1\frac{1}{8}$ tall
 6 high $\approx 8"$ 7 high $7\frac{7}{8}$



5 wide $\approx 8.5"$ } dividers 6 $6\frac{3}{4}$ + 4? + sides 5: $5\frac{5}{8}$ $1\frac{3}{8}$ for sides + dividers
 3 long $\approx 18"$ } 16.5 + ends + 2 dividers

B

White low back

white high middle
4 bins

Front rises

white middle front

Back

15 1/2

30.5

5

5

3

10 1/2

Red

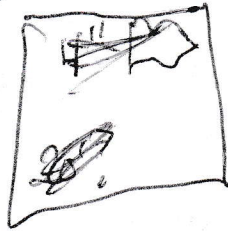
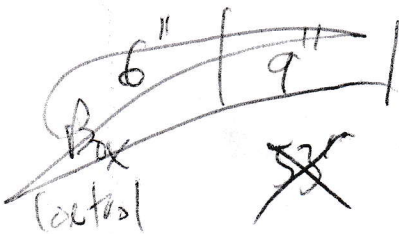
Green

5

Front B



< 4



6" || 4'

Sides
26" x 4" ~~10~~ At
width height top

4 main bins → 4 7x21

108 = 2 packs

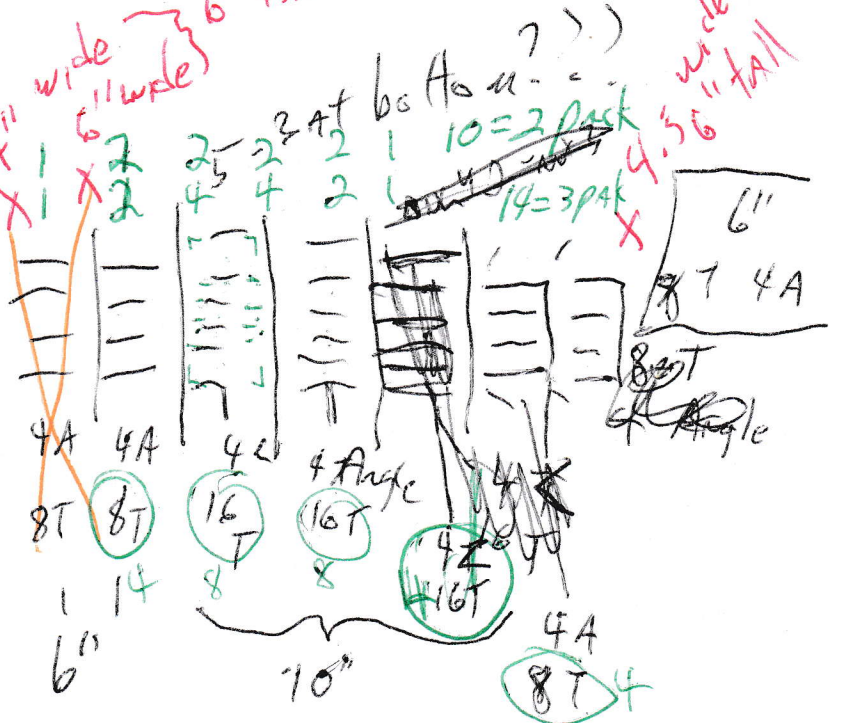
red braces → 1 2x21 = 1 pack

what ever left
5.5' | 5.5'

KA box

2	5x9	90
2	3x9	54
23	3x6	56 36
		200 containers 180

4" wide
6" wide
6" tall

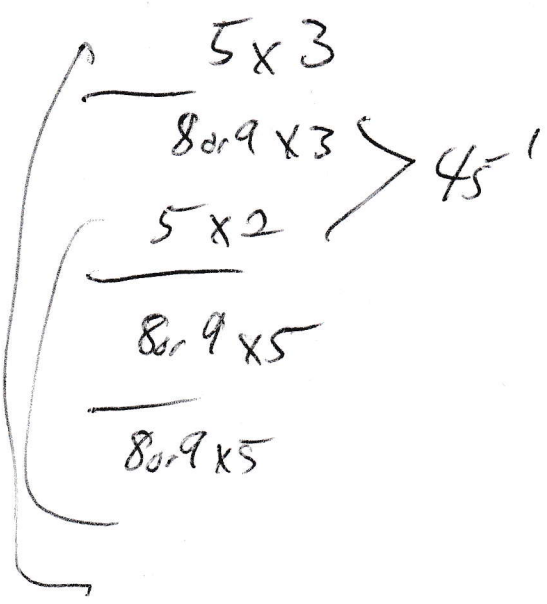


T 5 pieces, 24" = 10 16"
+ 2 pieces

36		18
56	10" T	= 28 T
16	10" A	= 8 A

~~24~~ 16 6" T 24" = 4 : 16 T 4 T
~~12~~ 8 6" A : 3 A 2 A

2+4+1 bins
7 packs - 5x7
2x2 2 24" 3



15

34 45'

40

40

34

15

144 40'
27

34 45'
2

178

29 ~~31~~

3 Tees (5) = 21.54

3 Angle (5) = 21.54

2 .125 (2) @ 10.69

2 @ .125 x 8 x 2 (1) @ 10.36

2 1 080 x 8 x 25 (2) @ 12.06